

Assigned Space

Building	Assigned Square Feet*
Hollister Research Center	5,495
Arts Building	1,464
Engineering Research Center	<u>812</u>
Total:	7,771

The Institute for Crustal Studies occupies a suite on the ground floor of the Hollister Research Center, a University owned building located off campus to the northwest at 6550 Hollister Avenue. The suite is comprised of 18 research, administrative and graduate student offices, a computer lab, an electronics lab, 2 work rooms, and a small conference room. There is a larger conference facility in the building available to us which is shared with the other occupants of the building.

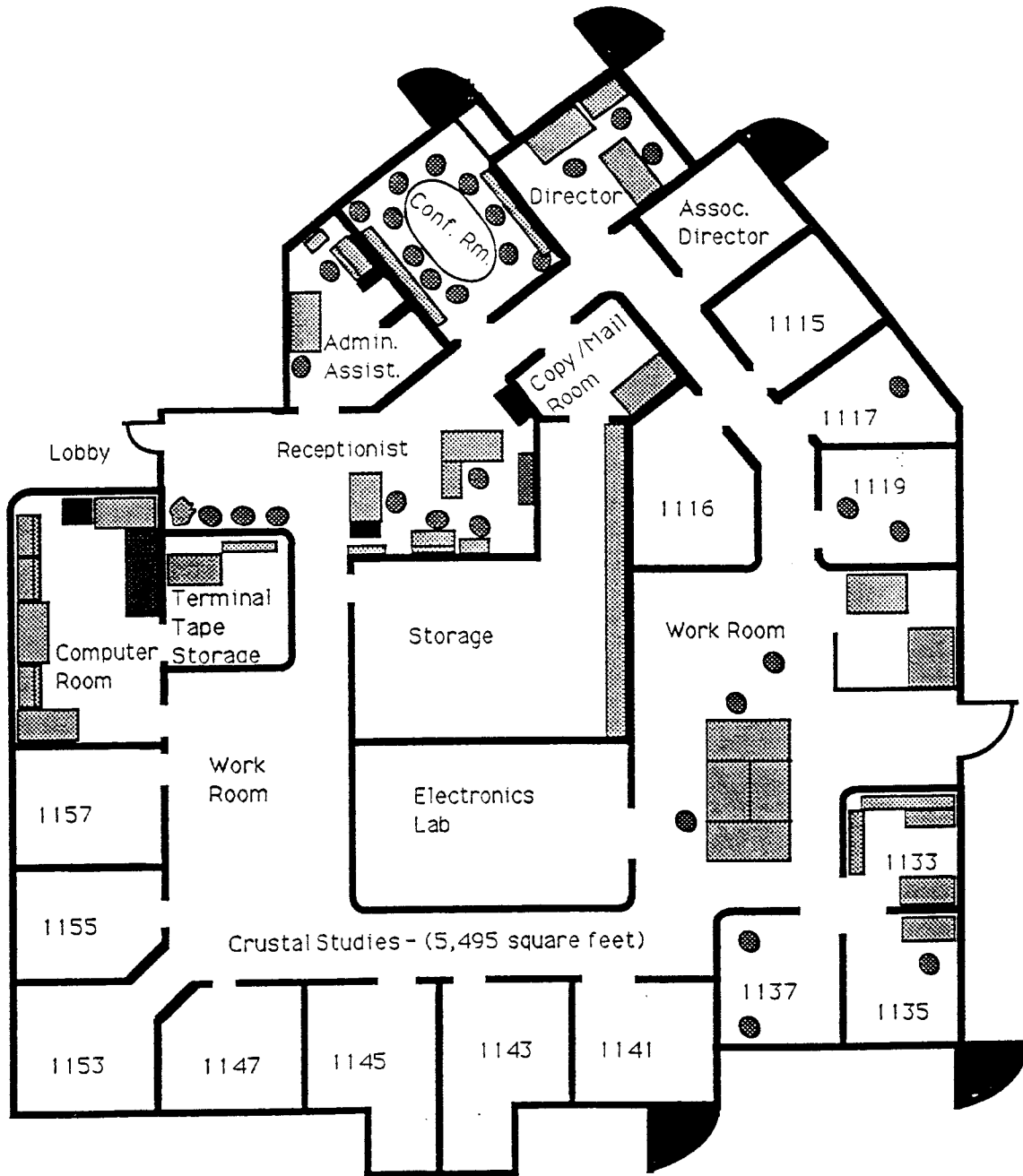
The Vadose Zone Monitoring Laboratory (VZML) of the Institute for Crustal Studies resides in the Arts Building on the UCSB campus. The facility was built over an 18 month period to the exact specifications of the investigators. It contains a negative pressure room for experiments requiring a controlled environment, two fume hoods, and extensive work bench and storage space. The facility also contains a conference room, a computer facility, a reception area, an executive office and cubicles for four graduate student researchers.

The space at the Engineering Research Center located about 1/2 mile from the Hollister Research Center is primarily used for storage, and will eventually house the portable broadband instruments for our participation in the Southern California Earthquake Center. One room of this space has been modified for use by the VZML team for work requiring special facilities such as removal and noise reduction related to soil sample preparation and vadose zone experimentation.

* This includes only space assigned directly to the Institute for Crustal Studies. This does not include office and lab facilities assigned to academic departments, and used by faculty and students for Institute for Crustal Studies supported research.

** In August of 1994 the Institute for Crustal Studies relocated to Girvetz Hall, Suite 1140.

FLOOR PLAN, INSTITUTE FOR CRUSTAL STUDIES, HOLLISTER RESEARCH CENTER



10/22/93
01:07

FDX: FACILITIES INVENTORY
SELF-AUDIT OF SPACE USE

FDXSP010
PAGE 224

PROGRAM: 2.1.40.0.0 OR PHYSICAL SCI SPACE STANDARD: NONSTD DEPT: I CRST STDYS

ROOM NUMBER	ROOM CODE	ROOM TYPE	S/N	ASF	STATIONS	SUB CATEGORY
BUILDING: ARTS CAAN: 8534						
1155	210	RESEARCH	S	1011	8	
1155A	211	RESRCH OFC	S	115	2	
1155B	211	RESRCH OFC	S	229	2	
1155C	211	RESRCH OFC	S	109	2	
4 ROOMS				TOTALS:	1464	14
BUILDING: ENG RSH LAB CAAN: 8997						
1485	225	RSCH LABSV	S	404	0	
1485A	225	RSCH LABSV	S	408	0	
2 ROOMS				TOTALS:	812	0
BUILDING: HRC CAAN: 8943						
1100A	335	OFFICE SRV	S	191	0	
1100B	335	OFFICE SRV	S	154	0	
1100C	335	OFFICE SRV	S	376	0	
1101	320	OTHER OFF	S	376	3	
1107	320	OTHER OFF	S	173	1	
1109	340	CONFERENCE	S	189	8	
1110	335	OFFICE SRV	S	88	0	
1111	320	OTHER OFF	S	141	1	
1113	211	RESRCH OFC	S	98	1	
1115	211	RESRCH OFC	S	109	1	

Institute for Crustal Studies 1993/94 Annual Report

10/22/93
01:07

FDX: FACILITIES INVENTORY
SELF-AUDIT OF SPACE USE

FDXSPO10
PAGE 225

PROGRAM: 2.1.40.0.0 OR PHYSICAL SCI

SPACE STANDARD: NONSTD

DEPT: I CRST STDYS

ROOM NUMBER	ROOM CODE	ROOM TYPE	S/N	ASF	STATIONS	SUB CATEGORY
1116	211	RESRCH OFC	S	128	2	
1117	310	ACAD OFF	S	111	1	
1119	211	RESRCH OFC	S	107	1	
1131	410	STUDY ROOM	N	661	0	
1133	211	RESRCH OFC	S	101	1	
1135	211	RESRCH OFC	S	102	1	
1137	211	RESRCH OFC	S	108	1	
1138	210	RESEARCH	S	312	5	
1141	211	RESRCH OFC	S	105	2	
1143	211	RESRCH OFC	S	130	2	
1145	211	RESRCH OFC	S	121	1	
1147	211	RESRCH OFC	S	109	1	
1151	410	STUDY ROOM	N	405	0	
1153	211	RESRCH OFC	S	115	1	
1155	211	RESRCH OFC	S	112	1	
1157	211	RESRCH OFC	S	117	1	
1158	211	RESRCH OFC	S	398	2	
1159	210	RESEARCH	S	246	0	
1159A	225	RSCH LABSV	S	112	0	
29 ROOMS TOTALS:						38
						5495